

Center *for an*
Urban
Future

@nycfuture

NEW YORK'S OLDER ADULT POPULATION IS BOOMING

christian gonzález-rivera

Senior Researcher, Center for an Urban Future

Older Adults are Driving Growth in New York's Population

65+ Population

↑ 26%

(2007-2017)

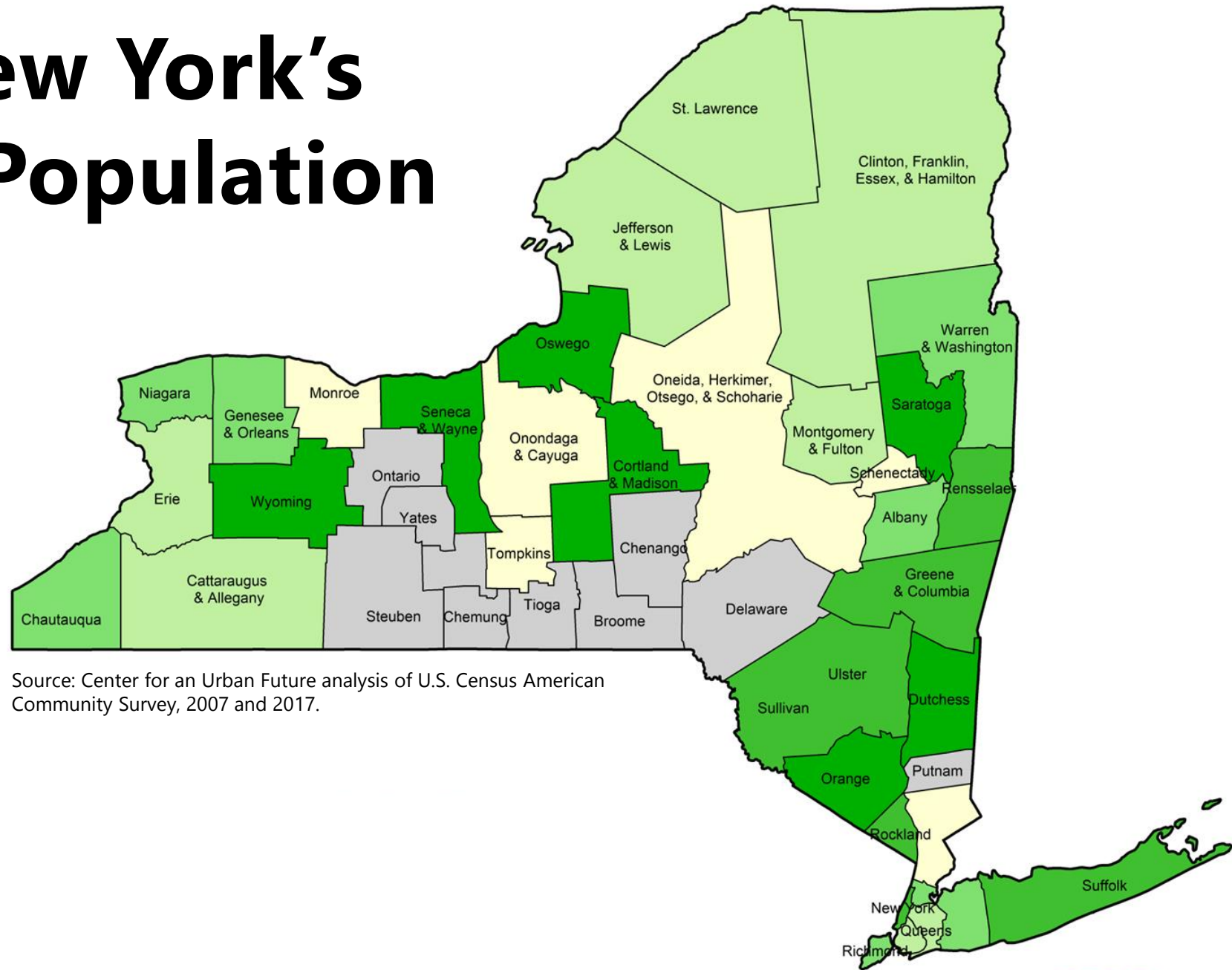
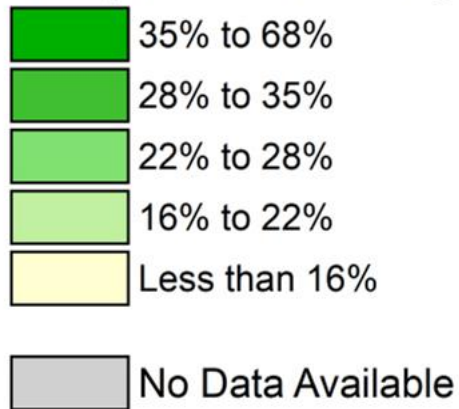
Under-65 Population

↑ 1%

(2007-2017)

Growth in New York's Older Adult Population (2007-2017)

% Population 65+ Change



Source: Center for an Urban Future analysis of U.S. Census American Community Survey, 2007 and 2017.

Older Adults are Driving Growth in New York's Population

	65+ Population (2007-2017)	Under-65 Pop. (2007-2017)
Wayne and Seneca Counties (Central NY)	↑ 67%	↑ 19%
Saratoga County (Capital Region)	↑ 55%	0%
Madison and Cortland Counties (Central NY)	↑ 45%	↑ 15%
Livingston and Wyoming Counties (Western NY)	↑ 43%	↓ 8%
Oswego County (Central NY)	↑ 42%	↓ 8%
Orange County (Hudson Valley)	↑ 40%	↓ 3%
Dutchess County (Hudson Valley)	↑ 36%	↓ 4%
Ulster and Sullivan Counties (Hudson Valley)	↑ 35%	↓ 7%
Suffolk County (Long Island)	↑ 34%	↓ 2%
Manhattan (NYC)	↑ 33%	↓ 2%
Columbia and Greene Counties (Capital Region)	↑ 33%	↓ 10%
New York State	↑ 26%	↓ 1%
New York City	↑ 24%	↑ 2%
Outside NYC	↑ 27%	↓ 2%

Source: U.S. Census American Community Survey, 2007 and 2017.

Older Adults are Driving Growth in New York's Population

	65+ Population (2007-2017)	Under-65 Population (2007-2017)
New York City	↑ 22%	↑ 2%
Bronx	↑ 22%	↑ 5%
Brooklyn	↑ 15%	↑ 3%
Manhattan	↑ 35%	↓ 2%
Queens	↑ 20%	↑ 1%
Staten Island	↑ 31%	↓ 4%

Source: U.S. Census American Community Survey, 2007 and 2017.

Oldest Neighborhoods in New York City

	Pop 65+ (2017)	65+ Population (2007-2017)	Under-65 Population (2007-2017)
Flushing / Whitestone, Qn.	50,868	↑ 26%	↑ 8%
Upper East Side, Mn.	42,251	↑ 31%	↓ 8%
Upper West Side, Mn.	41,194	↑ 44%	↓ 11%
Bellerose / Rosedale, Qn.	35,371	↑ 40%	↓ 2%
Jamaica, Qn.	33,605	↑ 26%	↑ 13%
Flatlands / Canarsie, Bk.	32,814	↑ 38%	↑ 2%
Washington Hts. / Inwood, Mn.	32,588	↑ 35%	↓ 5%
Lower East Side / Chinatown, Mn.	31,627	↑ 16%	↓ 11%
Sheepshead Bay / Gravesend, Bk.	30,934	↑ 35%	↑ 22%
Coney Island, Bk.	29,625	↑ 16%	↑ 11%
Bensonhurst, Bk.	29,615	↓ 17%	↑ 19%
South Shore, S.I.	29,432	↑ 46%	↓ 10%
Stuyvesant Town / Turtle Bay, Mn.	26,881	↑ 39%	↓ 1%
Soundview / Parkchester, Bx.	26,653	↑ 40%	↑ 10%
Bayside / Little Neck, Qn.	26,610	↑ 27%	↓ 10%

Growth of Older Adult Population in Brooklyn Neighborhoods

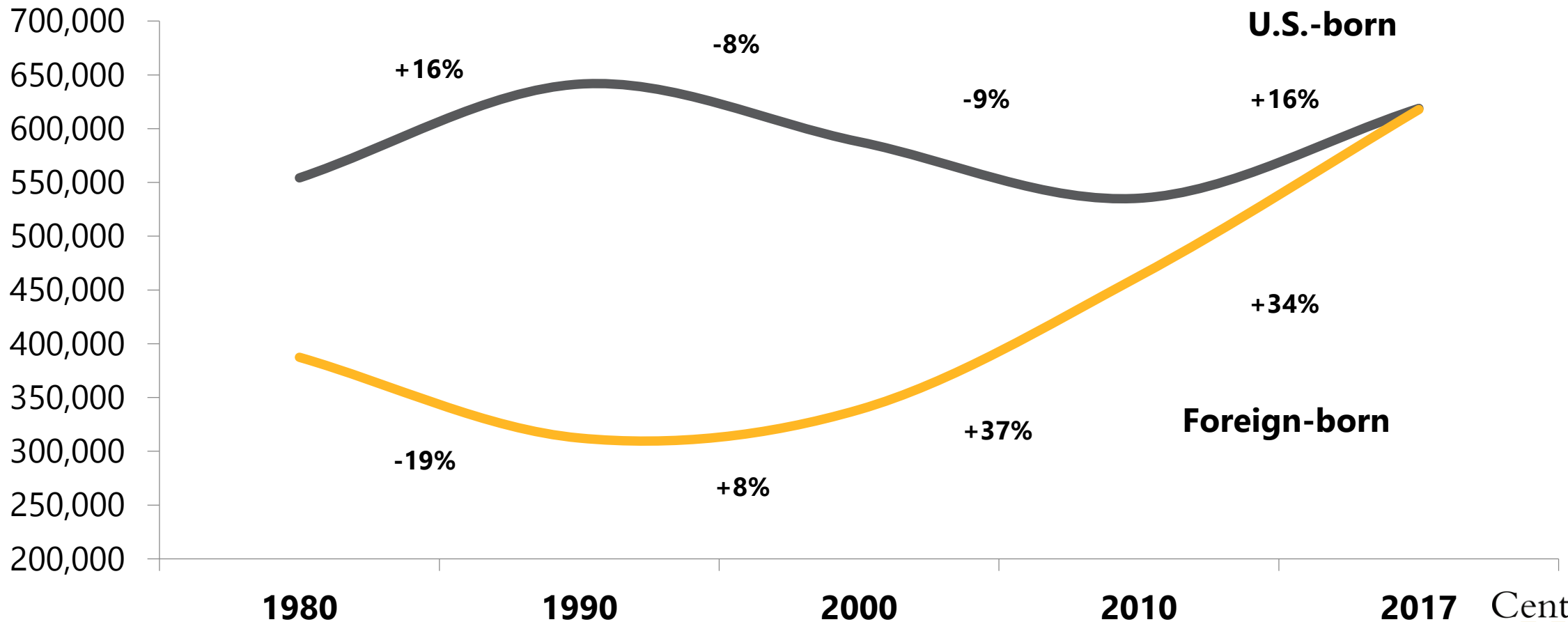
	65+ Population (2007-2017)	Under-65 Population (2007-2017)
East Flatbush	↑ 60%	↓ 3%
Flatlands / Canarsie	↑ 38%	↑ 2%
Brooklyn Heights / Fort Greene	↑ 37%	↑ 14%
Sheepshead Bay / Gravesend	↑ 35%	↑ 22%
Flatbush	↑ 33%	↓ 10%
South Crown Heights	↑ 29%	↓ 3%
East New York / Starrett City	↑ 28%	↑ 9%
Bedford Stuyvesant	↑ 28%	↑ 12%
Brownsville / Ocean Hill	↑ 28%	↓ 11%
Williamsburg / Greenpoint	↑ 24%	↑ 1%
North Crown Heights / Prospect Heights	↑ 22%	↑ 8%
Coney Island	↑ 16%	↑ 11%
Park Slope / Carroll Gardens	↑ 12%	↑ 6%
Bushwick	↑ 8%	↑ 8%
Borough Park	↑ 1%	↓ 19%
Sunset Park	↑ 0%	↓ 2%
Bay Ridge	↓ 7%	↓ 2%
Bensonhurst	↓ 17%	↑ 19%

Oldest Older Adults: 85+

	85+ Population (2017)	Numerical Change since 2007	Percent Change since 2007
South Shore, S.I.	4,030	↑ 2,226	↑ 123%
Greenwich Village / Financial District, Mn.	3,921	↑ 1,898	↑ 94%
Bensonhurst, Bk.	6,421	↑ 1,820	↑ 40%
Upper West Side, Mn.	4,898	↑ 1,701	↑ 53%
Washington Heights / Inwood, Mn.	5,239	↑ 1,629	↑ 45%
Lower East Side / Chinatown, Mn.	5,326	↑ 1,430	↑ 37%
Bellerose / Rosedale, Qn.	5,324	↑ 1,319	↑ 33%
Mott Haven / Hunts Point, Bx.	2,529	↑ 1,247	↑ 97%
Brooklyn Heights / Fort Greene, Bk.	1,601	↑ 1,197	↑ 296%
Williamsburg / Greenpoint, Bk.	3,557	↑ 1,174	↑ 49%

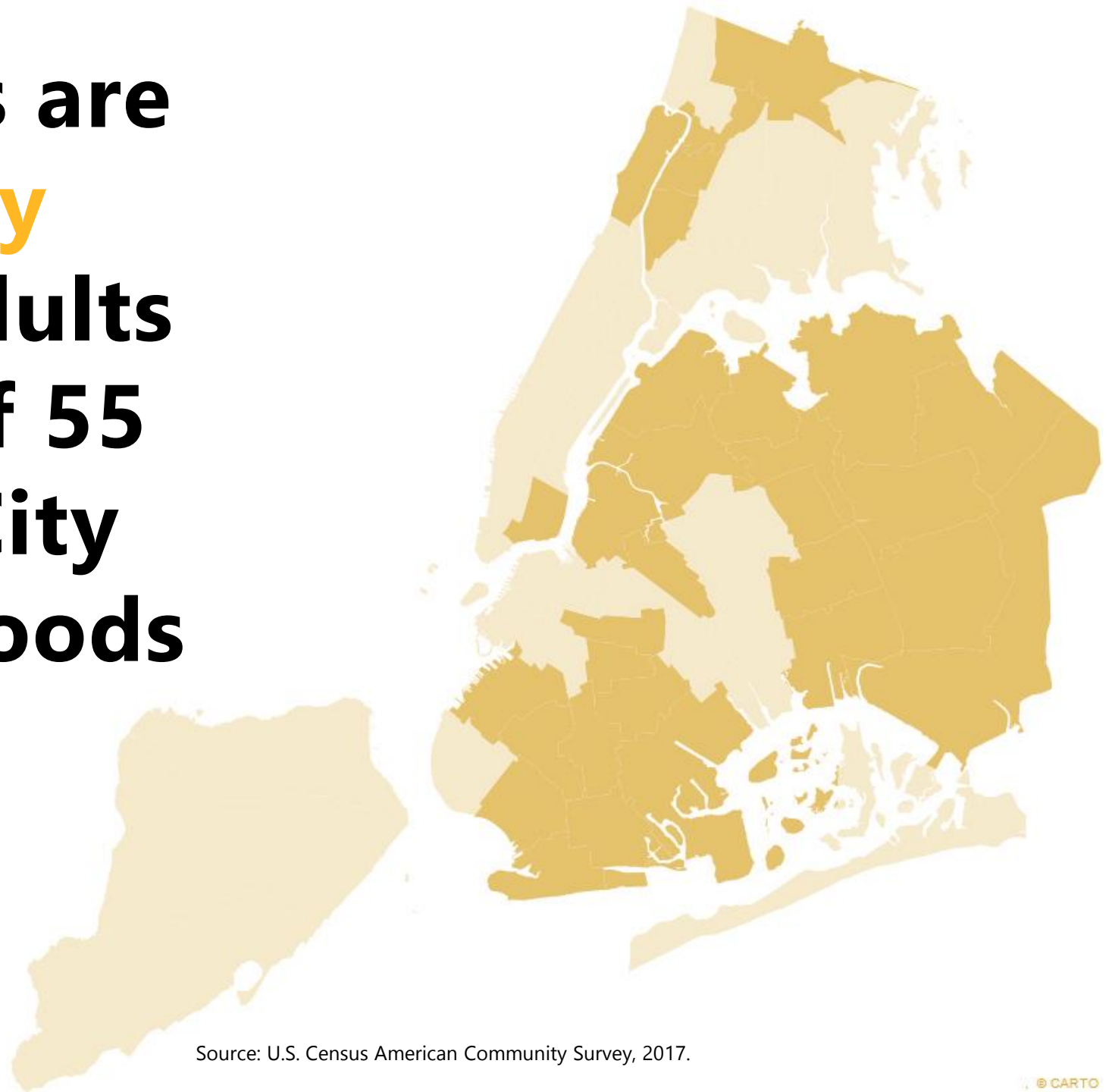
Source: U.S. Census American Community Survey, 2007 and 2017.

Older Immigrant Population in NYC is Growing Faster than Native-Born



Source: U.S. Census Decennial Census 1980-2010 and American Community Survey, 2017.

Immigrants are the **Majority** of Older Adults in **30** out of 55 New York City Neighborhoods



Source: U.S. Census American Community Survey, 2017.

Older Immigrant Population Outpacing U.S.-Born Older Adult Pop. Across New York

	Immigrants (2007-2017)	U.S.-Born (2007-2017)
Central Harlem, Mn.	↑ 187%	↑ 10%
Highbridge / S. Concourse, Bx.	↑ 129%	↓ 31.8%
University Heights / Fordham, Bx.	↑ 120%	↑ 13.3%
Chelsea / Clinton / Midtown, Mn.	↑ 113%	↑ 15.7%
Morrisania / East Tremont, Bx.	↑ 111%	↑ 18.2%
Bedford Stuyvesant, Bk.	↑ 108%	↑ 6.5%
Flatlands / Canarsie, Bk.	↑ 105%	↓ 13.0%
Howard Beach / S. Ozone Park, Qn.	↑ 96%	↑ 8.5%
Jamaica, Qn.	↑ 96%	↓ 21.6%
Soundview / Parkchester, Bx.	↑ 92%	↑ 16.9%

Source: U.S. Census
American Community
Survey, 2007 and 2017.

Older Immigrant Population Outpacing U.S.-Born Older Adult Pop. Across New York

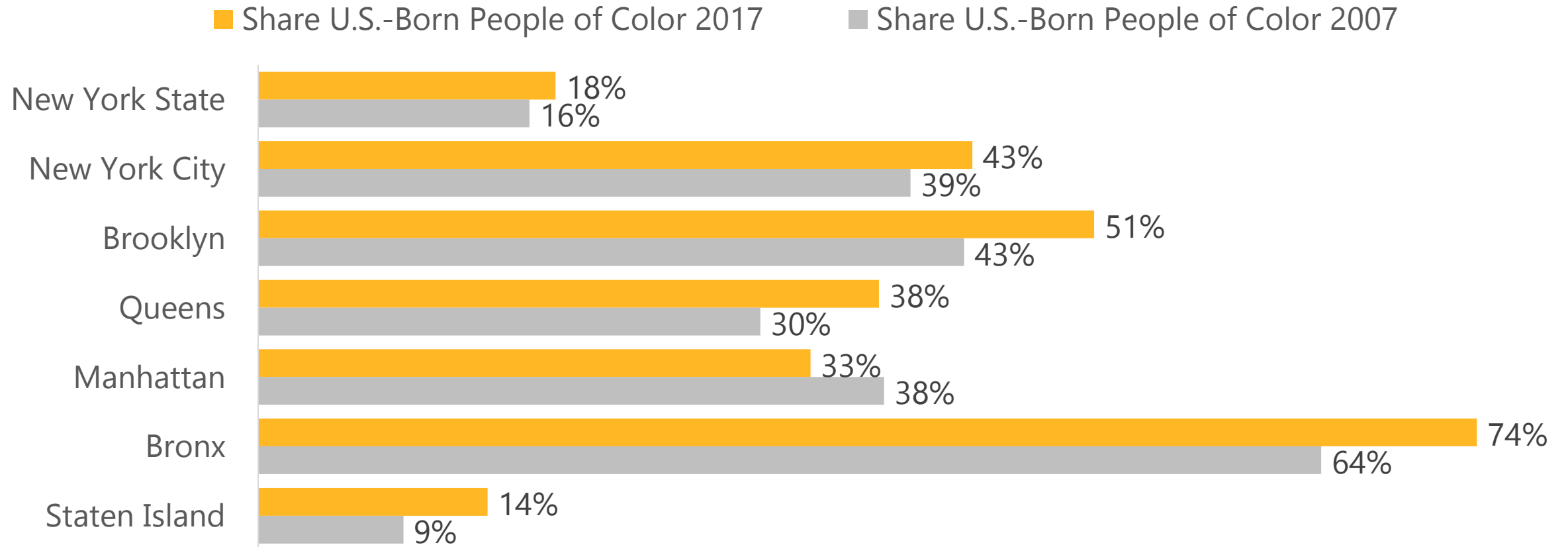
	Immigrants (2007-2017)	U.S.-Born (2007-2017)
Livingston and Wyoming Counties (Northern NY)	↑ 354%	↑ 40%
Cattaraugus and Allegany Counties (Western NY)	↑ 141%	↑ 18%
Tompkins County (Central NY)	↑ 126%	↓ 5%
Ulster and Sullivan Counties (Hudson Valley)	↑ 107%	↑ 27%
Jefferson and Lewis Counties (Northern)	↑ 89%	↑ 15%
Chautauqua County (Western NY)	↑ 77%	↑ 23%
Rockland County (Hudson Valley)	↑ 77%	↑ 17%
Bronx County (NYC)	↑ 67%	↑ 5%
Genesee and Orleans Counties (Western NY)	↑ 59%	↑ 25%
Albany County (Capital Region)	↑ 56%	↑ 19%
Suffolk County (Long Island)	↑ 52%	↑ 31%
Oswego County (Central NY)	↑ 52%	↑ 42%
New York State	↑ 41%	↑ 21%
NYS outside NYC	↑ 37%	↑ 25%

Source: U.S. Census American Community Survey, 2007 and 2017.

Growth of Older Immigrant Population in Brooklyn Neighborhoods

	Immigrants (2007-2017)	U.S.-Born (2007-2017)
Bedford Stuyvesant	↑ 108%	↑ 7%
Flatlands / Canarsie	↑ 105%	↓ 13%
Brownsville / Ocean Hill	↑ 80%	↑ 3%
East Flatbush	↑ 73%	↑ 23%
Sheepshead Bay / Gravesend	↑ 69%	↓ 2%
North Crown Heights / Prospect Heights	↑ 57%	↓ 6%
South Crown Heights	↑ 56%	↓ 5%
Flatbush	↑ 50%	↑ 5%
Bushwick	↑ 47%	↓ 22%
Williamsburg / Greenpoint	↑ 30%	↑ 18%
Sunset Park	↑ 28%	↓ 26%
Park Slope / Carroll Gardens	↑ 26%	↑ 8%
Brooklyn Heights / Fort Greene	↑ 22%	↑ 41%
Coney Island	↑ 21%	↑ 6%
Bay Ridge	↑ 21%	↓ 20%
Bensonhurst	↑ 13%	↓ 50%
East New York / Starrett City	↑ 7%	↑ 54%
Borough Park	↓ 8%	↑ 15%

U.S.-Born Older Adults are More Diverse



U.S.-Born Older Adults are More Diverse

African American Pop. Growth (2007-2017)

Rensselaer County	↑ 217%
Schenectady County	↑ 104%
Dutchess County	↑ 100%
Onondaga and Cayuga Counties	↑ 99%
Niagara County	↑ 89%
Rockland County	↑ 77%
Albany County	↑ 66%
Monroe County	↑ 53%
Suffolk County	↑ 50%

New York State	↑ 20%
New York City	↑ 6%

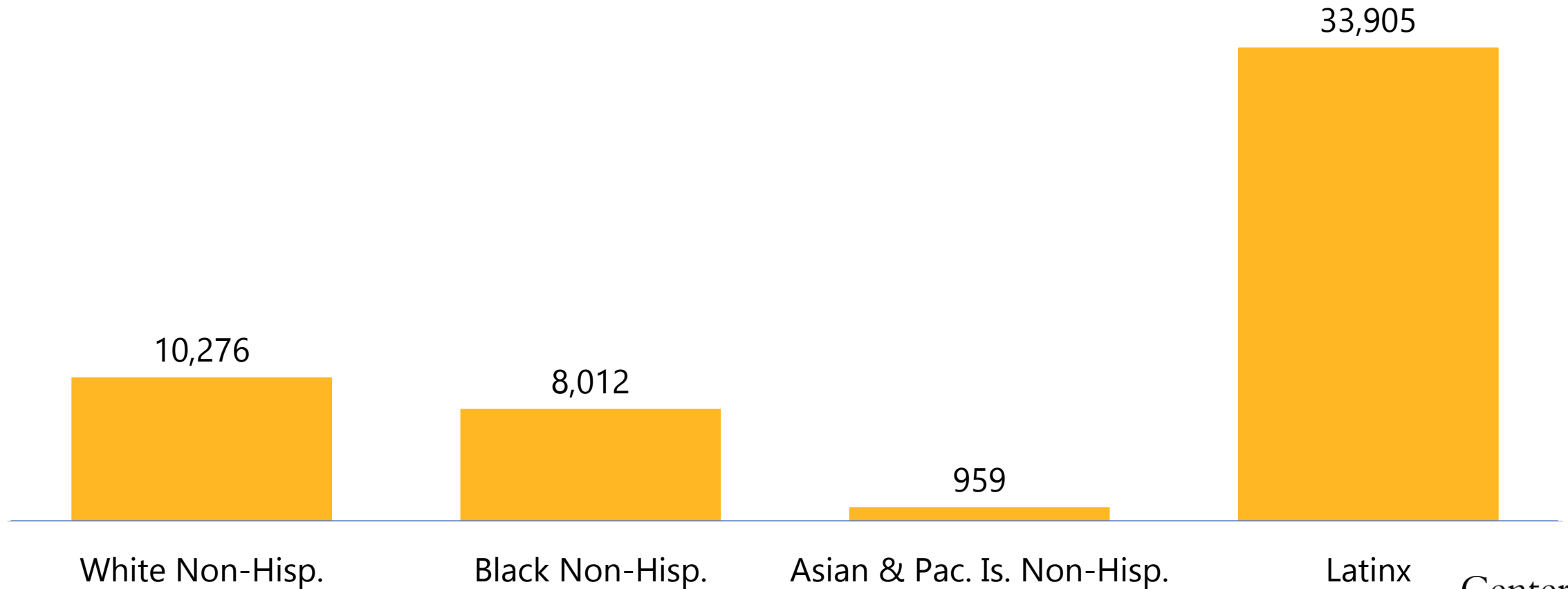
Latinx Population Growth (2007-2017)

Staten Island	↑ 190%
Rockland County	↑ 177%
Westchester County	↑ 175%
Orange County	↑ 133%
Nassau County	↑ 130%
Dutchess County	↑ 119%
Queens	↑ 106%
Suffolk County	↑ 91%
Erie County	↑ 87%
Monroe County	↑ 74%

New York State	↑ 57%
New York City	↑ 42%

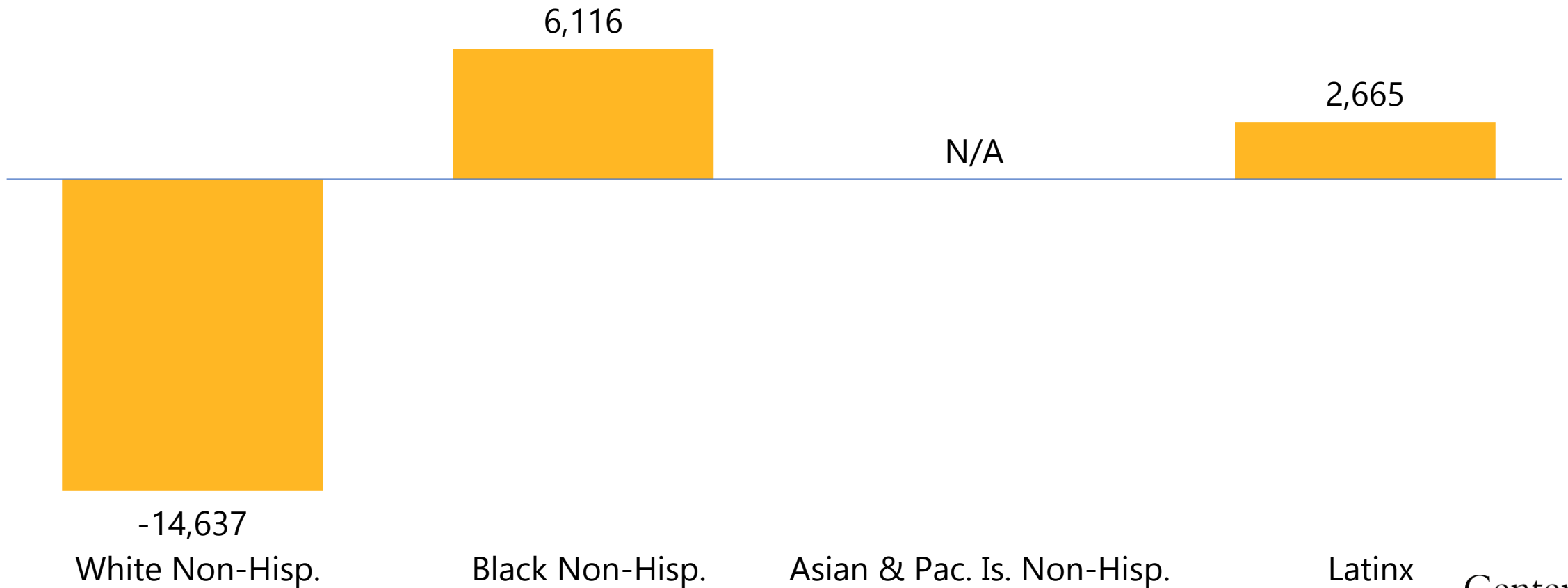
Source: U.S. Census American Community Survey, 2007 and 2017.

Growth in U.S.-Born Older Adults New York City, 2007-2017



Source: U.S. Census Decennial 1990 and American Community Survey, 2017.

Growth in U.S.-Born Older Adults Brooklyn, 2007-2017



Source: U.S. Census Decennial 1990 and American Community Survey, 2017.

Growth of Older African American Population in Brooklyn Neighborhoods

**65+ Population
(2007-2017)**

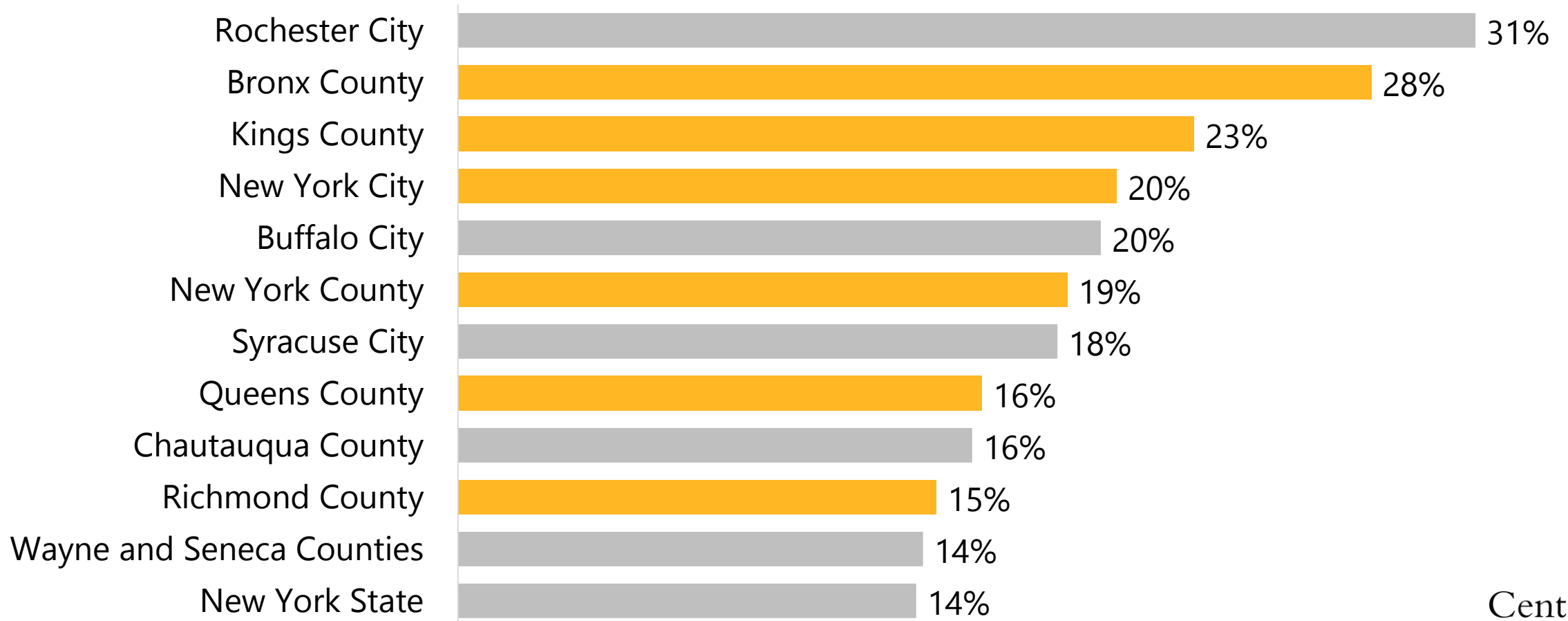
Flatbush	↑ 142%
Coney Island	↑ 88%
Flatlands / Canarsie	↑ 83%
East New York / Starrett City	↑ 79%
Williamsburg / Greenpoint	↑ 71%
Sheepshead Bay / Gravesend	↑ 62%
East Flatbush	↑ 58%
Bushwick	↑ 52%
Brooklyn Heights / Fort Greene	↑ 36%
Borough Park	↑ 19%
Bedford Stuyvesant	↑ 18%
Brownsville / Ocean Hill	↑ 16%
South Crown Heights	↑ 12%
North Crown Heights / Prospect Heights	↑ 1%
Park Slope / Carroll Gardens	↓ 32%

Growth of Older Latinx Population in Brooklyn Neighborhoods

65+ Population (2007-2017)

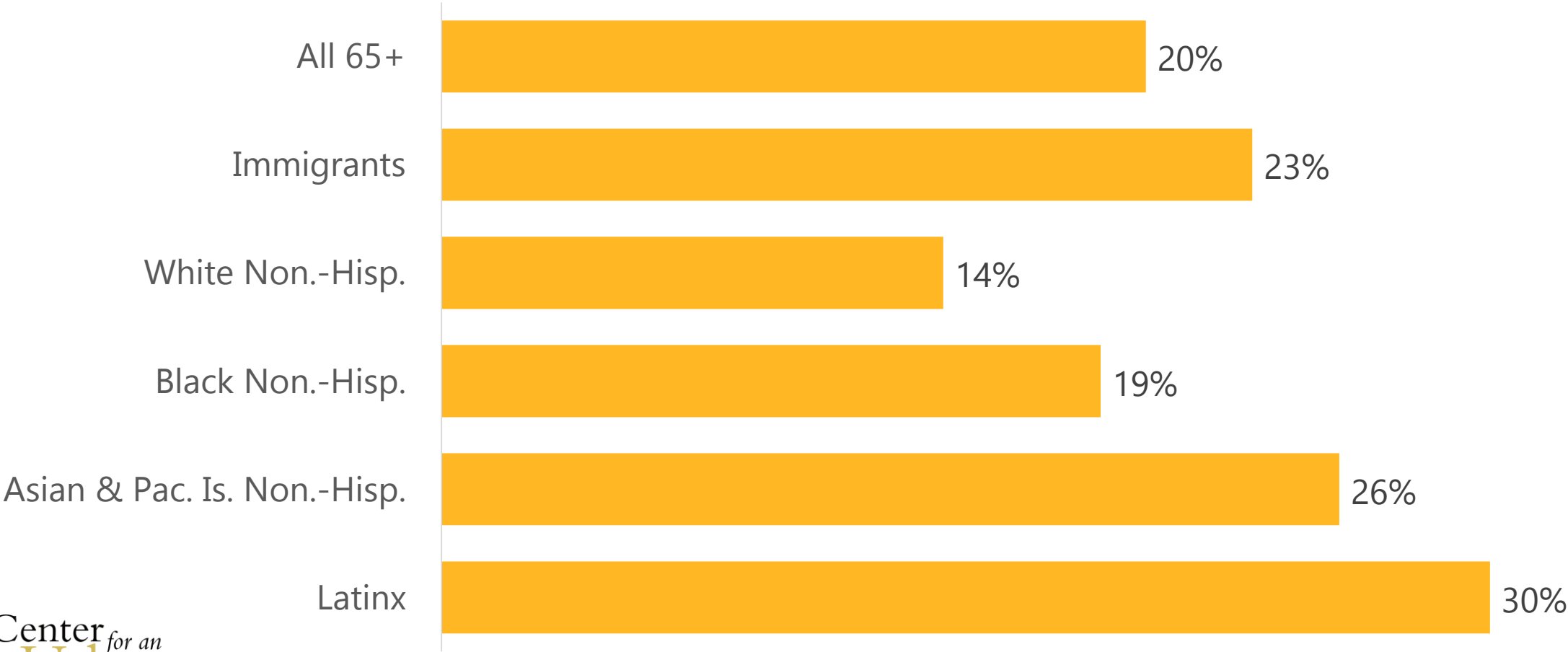
Borough Park	↑ 229%
South Crown Heights	↑ 199%
Flatlands / Canarsie	↑ 140%
East Flatbush	↑ 131%
North Crown Heights / Prospect Heights	↑ 92%
East New York / Starrett City	↑ 89%
Williamsburg / Greenpoint	↑ 70%
Bay Ridge	↑ 57%
Sheepshead Bay / Gravesend	↑ 44%
Coney Island	↑ 40%
Bedford Stuyvesant	↑ 39%
Brownsville / Ocean Hill	↑ 34%
Park Slope / Carroll Gardens	↑ 27%
Flatbush	↑ 18%
Brooklyn Heights / Fort Greene	↑ 11%
Bushwick	↑ 10%
Sunset Park	↓ 23%
Bensonhurst	↓ 27%

Older New Yorkers in Poverty



Source: U.S. Census American Community Survey, 2017.

Older New Yorkers in Poverty New York City



Center *for an*
Urban
Future

@nycfuture

christian gonzález-rivera
Senior Researcher
Center for an Urban Future

cgr@nycfuture.org

www.nycfuture.org